

# Flowing Results Acknowledgement Using an Open Standards Interface

MUN 11-12 September 2019

Business Analytics Forum 3 – 4th July 2019

**David Simm**

Business Intelligence & Data Warehouse Manager  
The Rotherham Foundation Trust



- David Simm

Business Intelligence and Data Warehouse Manager

10 years NHS experience

Analytics and data warehouse teams

New Data Warehouse team – Develop and implement

Provide expertise in developing reporting solutions to meet the business needs]

The story of how Rotherham Foundation Trust, with the use of interoperability between our systems, now have the ability to record, acknowledge and report clinical results.



# Rotherham Health Informatics

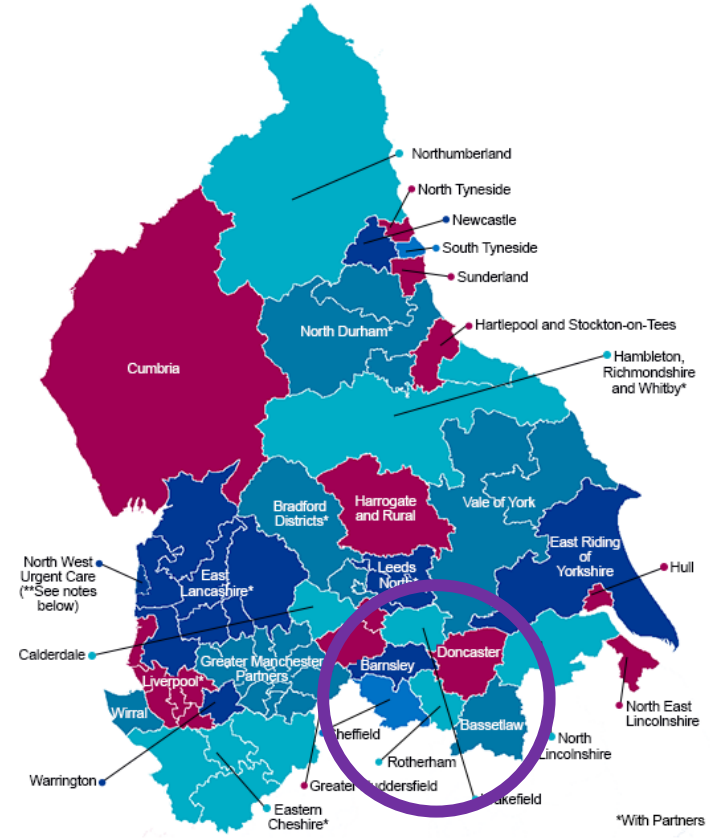
A fully integrated health and social care community with a population of c260,000

‘Medium’ DGH + community. 4,200 staff, £240M pa

Rated ‘**outstanding**’ in a recent Care Quality Commission (CQC) inspection for its digital programmes

The vision for Informatics is to be ‘digital by default’ and be a lead in providing integrated digital services for the Trust, supporting **integrated care** in the local health community and beyond.

Paper-lite by 2020



# Open Standards

- David Simm

Open Standards

Best example of open standards... the internet!

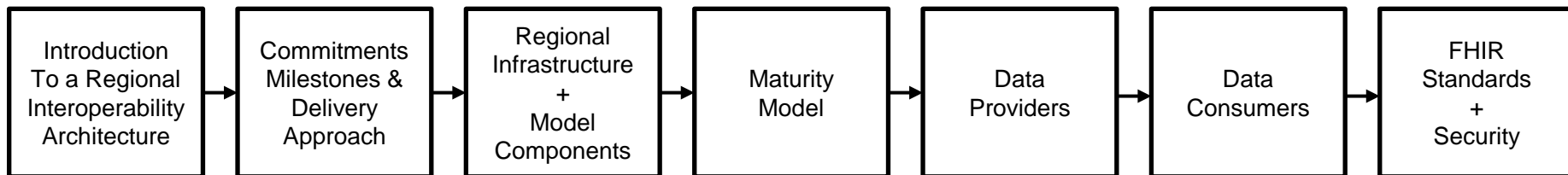
HL7, FHIR,

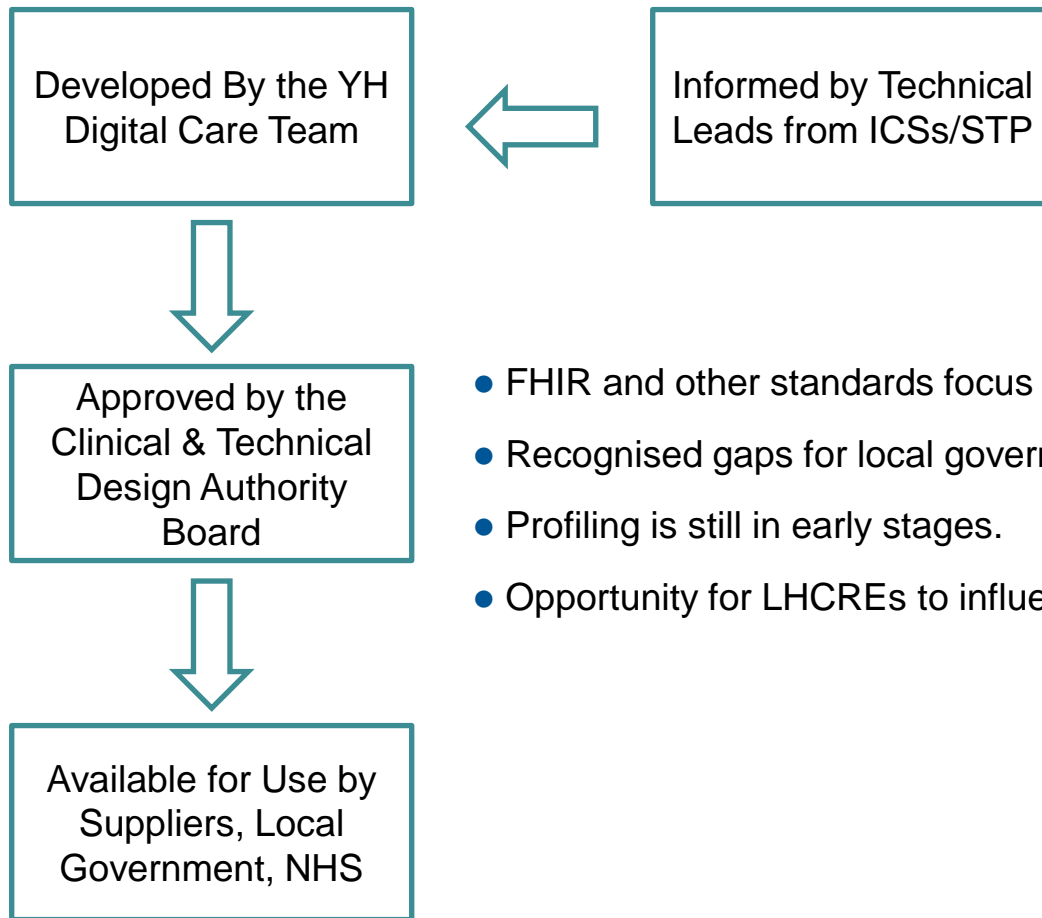


- To communicate proposals for a regional architecture in context with LHCRE commitments.
- To propose a model for maturing local interoperability capabilities.
- To explain what is involved for localities to connect to and use the YHCR.
- To incorporate your feedback into our plans.
- Begin to engage with care providers and plan adoption.

## Part 1: Regional Responsibilities

## Part 2: Local Adoption





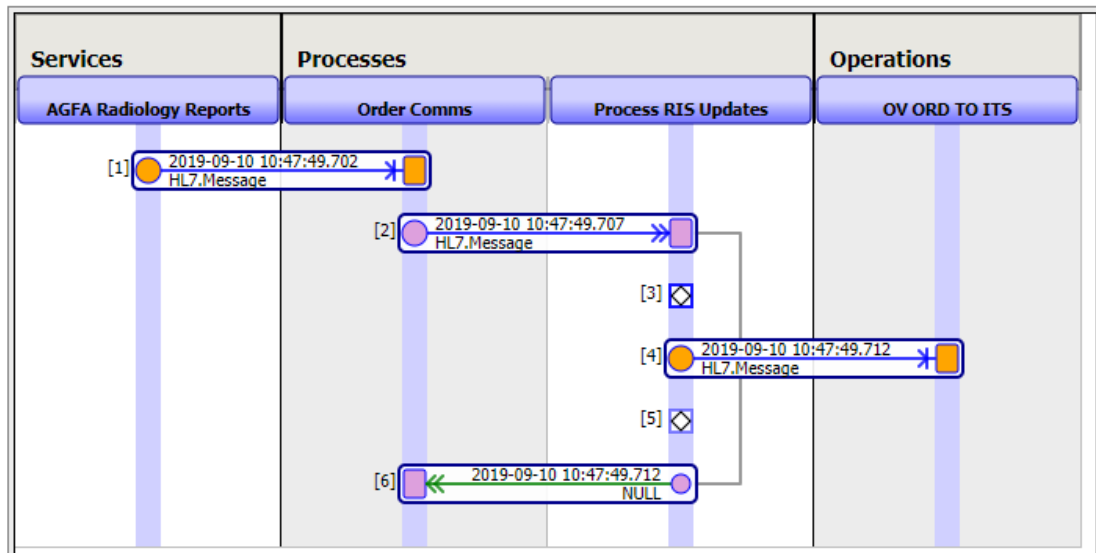
- FHIR and other standards focus on healthcare.
- Recognised gaps for local government and social care.
- Profiling is still in early stages.
- Opportunity for LHCREs to influence standards bodies.



# Ensemble

 Visual Trace

Session ID: 879097767  Legend  Printable Version Go to items  Items per page  Show



View: [Grid Icon] [List Icon] [Table Icon]

Start Stop

Refresh:  on  off

Sort: Name Status Number

Production Running

Category: All

Legend

Production Settings

Services +

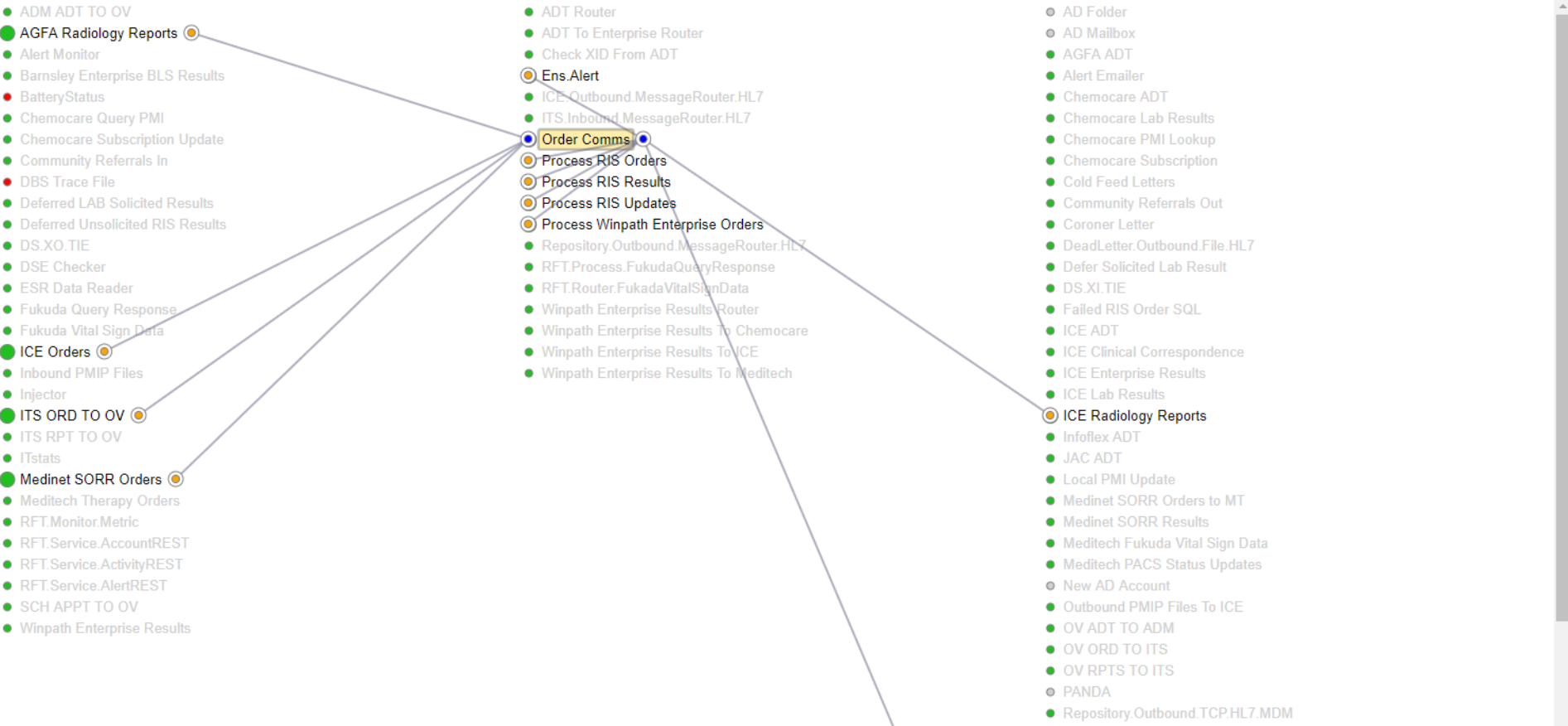
Processes +

Operations +

- ADM ADT TO OV
- AGFA Radiology Reports
- Alert Monitor
- Barnsley Enterprise BLS Results
- BatteryStatus
- Chemocare Query PMI
- Chemocare Subscription Update
- Community Referrals In
- DBS Trace File
- Deferred LAB Solicited Results
- Deferred Unsolicited RIS Results
- DS.XO.TIE
- DSE Checker
- ESR Data Reader
- Fukuda Query Response
- Fukuda Vital Sign Data
- ICE Orders
- Inbound PMIP Files
- Injector
- ITS ORD TO OV
- ITS RPT TO OV
- ITstats
- Medinet SORR Orders
- Meditech Therapy Orders
- RFT.Monitor.Metric
- RFT.Service.AccountREST
- RFT.Service.ActivityREST
- RFT.Service.AlertREST
- SCH APPT TO OV
- Winpath Enterprise Results

- ADT Router
- ADT To Enterprise Router
- Check XID From ADT
- Ens.Alert
- ICE.Outbound.MessageRouter.HL7
- ITS.Inbound.MessageRouter.HL7
- Order Comms
- Process RIS Orders
- Process RIS Results
- Process RIS Updates
- Process Winpath Enterprise Orders
- Repository.Outbound.MessageRouter.HL7
- RFT.Process.FukudaQueryResponse
- RFT.Router.FukadaVitalSignData
- Winpath Enterprise Results Router
- Winpath Enterprise Results To Chemocare
- Winpath Enterprise Results To ICE
- Winpath Enterprise Results To Meditech

- AD Folder
- AD Mailbox
- AGFA ADT
- Alert Emailer
- Chemocare ADT
- Chemocare Lab Results
- Chemocare PMI Lookup
- Chemocare Subscription
- Cold Feed Letters
- Community Referrals Out
- Coroner Letter
- DeadLetter.Outbound.File.HL7
- Defer Solicited Lab Result
- DS.XI.TIE
- Failed RIS Order SQL
- ICE ADT
- ICE Clinical Correspondence
- ICE Enterprise Results
- ICE Lab Results
- ICE Radiology Reports
- Inflex ADT
- JAC ADT
- Local PMI Update
- Medinet SORR Orders to MT
- Medinet SORR Results
- Meditech Fukuda Vital Sign Data
- Meditech PACS Status Updates
- New AD Account
- Outbound PMIP Files To ICE
- OV ADT to ADM
- OV ORD TO ITS
- OV RPTS TO ITS
- PANDA
- Repository.Outbound.TCP.HL7.MDM





# Acknowledgement Summary

Last refreshed: | 9/9/2019 7:51:23 PM

StartDate3MonthsAgo

- No
- Yes

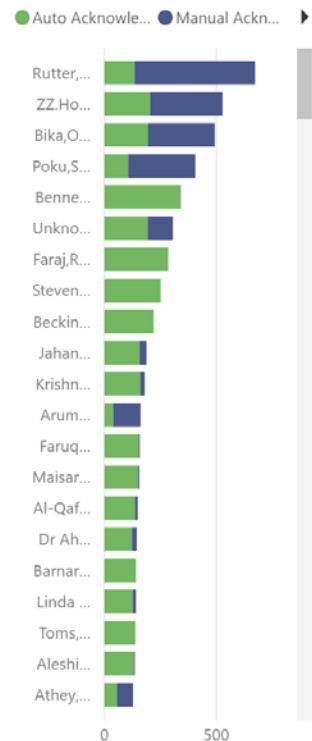
StartDateOfSpell

6/11/2019 9/10/2019



Clinician	Total ...	Yet to be ...	Count Manual ...	Ave Days to ...	%Manual...
Rutter,Susan	673	208	538	10.25	79.94%
ZZ.Hospital,Midwife	528	449	324	17.49	61.36%
Bika,Olanike	493	219	298	17.85	60.45%
Poku,Stephen	406	166	300	12.03	73.89%
Bennett,Paul	341	291	1	38.22	0.29%
Unknown	306	114	113	24.92	36.93%
Faraj,Radwan	285	240	0	41.71	0.00%
Stevens,Mark	251	176	0	40.16	0.00%
Beckingham,Paul	220	156	0	39.71	0.00%
Jahangir,Abdul	188	107	31	30.08	16.49%
Krishnasamy,Gopiraj	180	9	20	34.62	11.11%
Arumugam,Danaradja	162	20	122	8.04	75.31%
Faruqui,Asad	158	61	4	37.34	2.53%
Maisari,Ahmed	156	156	6	35.62	3.85%
Al-Qafaji,Abbas	149	97	11	37.01	7.38%
Dr Ahmed Abdelhafiz	145	84	22	29.19	15.17%
Barnard,James	141	114	0	42.00	0.00%
Linda Mizun	141	84	15	30.71	10.64%

Total Reports Acknowledg...



Division  
All

TreatmentFunctionDescr...  
All

- Clinician
- Adewunmi,Babatunde
  - Ahmed,Adnan
  - Ahmed,Ayman S.
  - Ahmed,Bilal
  - Ahmed,Raymond
  - Alam,Altaf
  - Aleshinloye,Olabode
  - Al-Qafaji,Abbas
  - Alwail,Ali Nagi
  - Alzouebi,Ibraheem
  - Al-Zubaidi,Intesar
  - Amin,Sarab
  - Ansari,Naadir
  - Arumugam,Danaradja
  - Askari,Farideh
  - Athey,Victoria
  - Atkins.Ashlev

- David Simm

Regional interoperability will be a catalyst for new models of care.

Data will be shared and acquired in new ways.

New user interfaces will be needed to enable different ways of working.

FHIR reduces dependencies on monolithic data repositories.

Embedded user interfaces reduce dependency on monolithic applications.



- FHIR

Data Providers	Regional Infrastructure	Data Consumer
FHIR resources related to pseudonymised patients using local coding systems.	Regional pseudonymisation service.	Pseudonymised data is available to centres of analytics.



# Thank you

# Discussion & Questions

**David Simm**

Business Intelligence & Data Warehouse Manager

